

# Singapore CA Qualification Exam Checklist

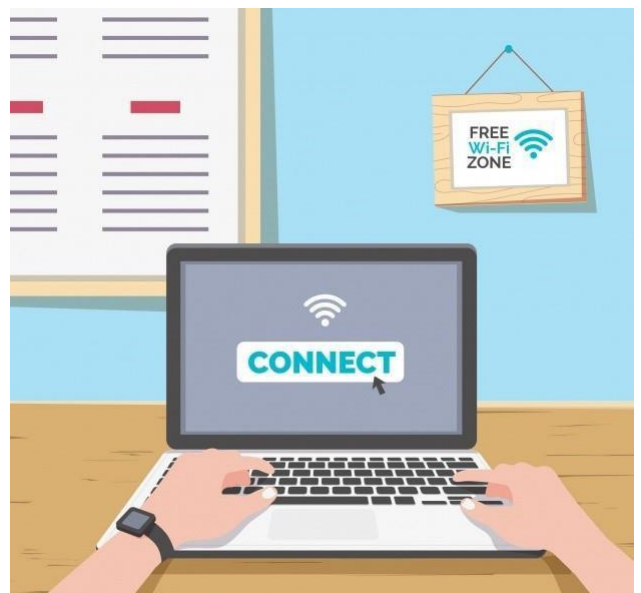


## EXAM TOOLKIT

- Hardware & Software
- Login Credentials
- Examination Environment
- Identity Verification
- What to Bring

## BEFORE EXAM

- Prepare hardware & software
- Complete mock examination



## DURING EXAM

- Navigating e-Examination Platform
- What to expect on Exam Day



## EXAM DISCIPLINARY POLICY

- Disciplinary Policy
- Grounds for Disciplinary Actions



When in doubt, ask for help

Email: [scaq@isca.org.sg](mailto:scaq@isca.org.sg)

Tel: (65) 6749 8060

## EXAM AND CONTACT DETAILS

- Exam Details
- Contact Details

WE WISH YOU ALL THE BEST  
IN YOUR EXAM!

# SINGAPORE CHARTERED ACCOUNTANT QUALIFICATION

## EXAMINATION GUIDELINES AND RULES FOR THE FOUNDATION PROGRAMME (FP) AND PROFESSIONAL PROGRAMME (PP)

### Introduction

This guide prepares the Foundation Programme (FP) and Professional Programme (PP) candidates for the remote proctored e-examinations and covers the step-by-step preparations for the Singapore CA Qualification examinations. The e-examination platform uses the Cirrus programme, and online remote proctoring uses the Proctorio programme.

## SECTION 1: EXAM TOOLKIT

### (A) Hardware & Software

1. Use your personal device i.e. laptop or desktop. (See specifications below).
  - X No work/office laptop
  - X No tablet devices or Microsoft Surface RT
2. Working webcam and microphone are mandatory.

### Device Specifications

Device	<u>Windows Specifications</u> Intel Pentium Processor or better At least 8GB RAM ( <b>with at least 2GB that is unused by other applications during the exam</b> ) Hard Drive: at least 2GB of available space	<u>Mac Specifications:</u> Intel Processor At least 8GB RAM ( <b>with at least 2GB that is unused by other applications during the exam</b> ) Hard Drive: at least 2GB of available space
Operating System	<u>Windows:</u> Microsoft Windows 7 and above	<u>Mac OS:</u> Mac OS X 10.12 Sierra and above
Display	Screen resolution of 1280 x 800   <b>No secondary monitors allowed</b>   15" or higher display screen recommended.	
Webcam and microphone	Webcam resolution: 320x240 (minimum), <b>external webcam required if internal webcam does not allow 360 degrees room scan</b> Microphone, either internal or external	
Software required (Mandatory)	Google Chrome or Microsoft Edge (latest 3 versions) Click <a href="#">here</a> to download and install Google Chrome and <a href="#">here</a> to download and install Microsoft Edge.  Proctorio Google Chrome or Microsoft Edge extension Click <a href="#">here</a> to install. See Section 2 A Step 3 to enable incognito access  Microsoft Office Applications ( <u>Online Office Applications are not allowed</u> ) Adobe Acrobat Reader	
Internet connection	Minimum 2.5Mbps speed Use a wired connection, if possible ( <b>If using Wi-Fi, minimise the internet usage of others using the same network during the exam</b> )	



Tip 1: Connect to a power source to avoid draining laptop battery Tip 2: Ensure stable internet connection throughout examination

### (B) Login Credentials

3. Your username is your **email address which you have registered with the SCAQ Programme**. Refer to Section 3 Part (A) Point 1 below.

### (C) Examination Environment

4. Sit for the exam alone in a conducive environment (i.e. brightly lit room with closed door, free from noise and distractions).
5. No one is allowed in the room or to enter the room during the examination.
6. Prohibited items are to be **removed** from table. (refer to table in Section E "What to Bring").
7. **Mandatory** to perform a 360 degree-environment scan via webcam recording.

**(D) Identity verification**

- 8. ISCA or the appointed vendor collects the following during the exam, for verification of the candidate and remote proctoring purposes:
  - a. Live images & Photo ID (Only NRIC, FIN card or Passport is accepted)
  - b. Video, audio and computer screen recordings

**(E) What To Bring**

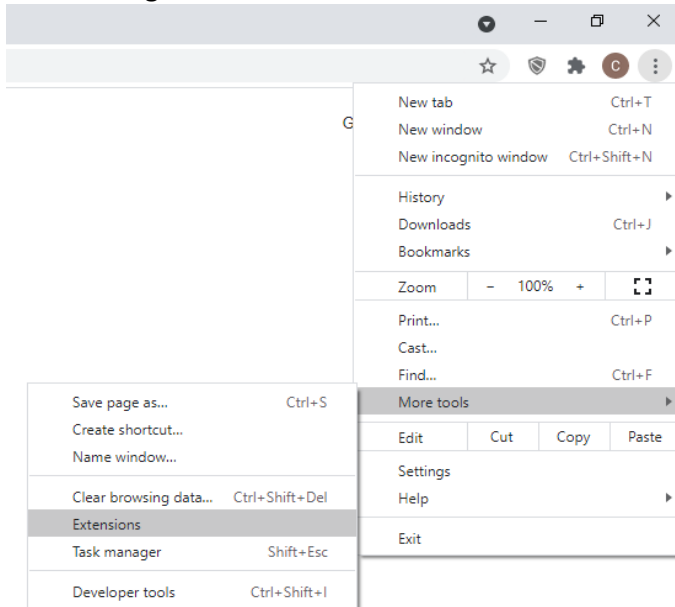
<b>Foundation Programme</b> (restricted open-book examination) – no access to hard disk and device applications (except Microsoft Excel)	<b>Professional Programme</b> (open-book examination) – access to hard disk and device applications
✓ Calculators, 1 A4 sized ‘cheat’ sheet and 1 A4 sized blank paper	✓ Calculators and permitted reference materials (hardcopy and softcopy)
✗ No reference materials and books	✓ Softcopy reference materials to be placed into a <b>single</b> folder and saved onto desktop
<b>Other Prohibited Items</b> <ul style="list-style-type: none"><li>✗ No watches /alarm clocks /external monitors/ tablets/ iPads/ wireless accessories/ mobile phones #</li><li>✗ No headphones / earpieces / non-religious head coverings (i.e. caps, scarfs, hats)</li><li>✗ No devices that can transmit information</li><li>✗ No food and drinks (only plain water is allowed)</li></ul>	

# Allowed to use mobile phone’s hotspot for internet connectivity should Wifi fail (**ensure internet speed meets the requirements**) and mobile phone must be out of reach during exam. Only use mobile phone for emergencies/ technical issues during exams (i.e. exam taker to be in full view of webcam throughout duration of call). Misuse of hotline warrants strong disciplinary actions.

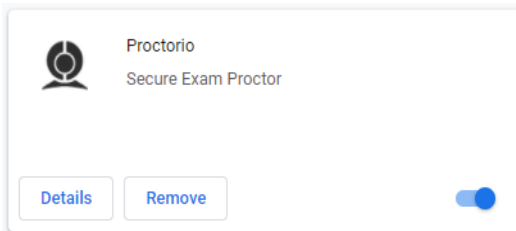
## SECTION 2: BEFORE THE EXAMINATION

### (A) Prepare hardware and software

1. Ensure that your device meets the minimum system requirements as stated in Section 1 (A).
2. **Check that Chrome or Edge browser (make it the default browser) and Proctorio extension are installed.** Links are provided in Section 1 (A).
3. **Enable incognito access for the Proctorio extension.**



4. Select the Proctorio extension and click “Details”.



5. Enable incognito access

Allow in incognito

Warning: Google Chrome cannot prevent extensions from recording your browsing history. To disable this extension in incognito mode, unselect this option.



6. Test your hardware and internet connection (via this [link](#)) at least 2 weeks before your examination date.
7. Check that your webcam is working and has a minimum resolution of 320x240 using this [link](#).
8. Make sure that your microphone is working using this [link](#).

### (B) Complete mock exam

9. The mock examination is meant to assist candidates to be familiarised with the e-exam platform. The mock examination does not have remote proctoring features turned on (i.e. no check-in process required). Remote proctoring features will be turned on for the actual examinations.
10. Access using **one** of the links below based on your Programme.

Foundation Programme	Professional Programme
<a href="#">Mock Exam Paper 1</a> or <a href="#">Mock Exam Paper 2</a>	<a href="#">Mock Exam Paper 1</a> or <a href="#">Mock Exam Paper 2</a>

11. Refer to Section 3 Step 17 for details on how to navigate the e-examination platform.

## SECTION 3: DURING THE EXAMINATION

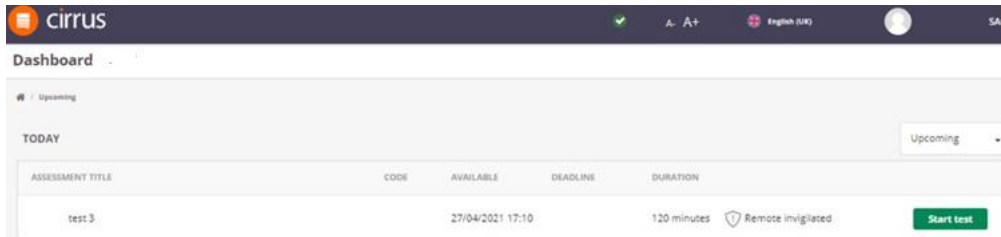
### (A) Navigating the e-Examination Platform

#### Logging in

1. Login to your Cirrus account using this [link](#). Your username is your **email address which you have registered with the SCAQ Programme**. Use the 'Can't Log in?' feature to create a password or if you have forgotten your password.

#### Dashboard

2. After log-in, you will see your personalised dashboard with your upcoming examination(s).



#### Starting an assessment/examination

3. Ensure that all application windows are closed before starting the examination.
4. **IMPORTANT** Your computer screen will be monitored throughout the examination. Strong disciplinary action will be taken against exam takers who are found to have breached the examination policy.
5. Click on the [Start test](#) button to start the check-in process. Button will only appear at the 'available time'.
6. If your computer has less than 2GB of free/available RAM, you may receive the following error message(s). Close all additional browsers, tabs or applications which are not required for the examination. If the error message continues to appear, you may ignore it and click [Start exam pre-checks](#) to continue, however, disruptions in the middle of the examinations test may occur.

**Warning:** Although your computer has enough RAM installed, only 0.07GB is available at this moment. This is at or below the minimum requirement of 2GB. We recommend restarting your computer or closing other programs before proceeding. [Learn more about what this means](#).

By continuing, you acknowledge that your exam is likely to crash. Your exam administrator will be notified you skipped this warning.

#### Just a heads up...

It looks like your computer is pretty busy right now.

You can still proceed with your exam, but we recommend that you close all open tabs and any applications you have running in the background and try again.

**Warning:** This computer is only running on battery power (84%). We recommend you plug this computer in before continuing.

7. A system diagnostics test will run. This may take up to a minute.

### System Diagnostics Test

Initial system checks passed



Webcam




Microphone

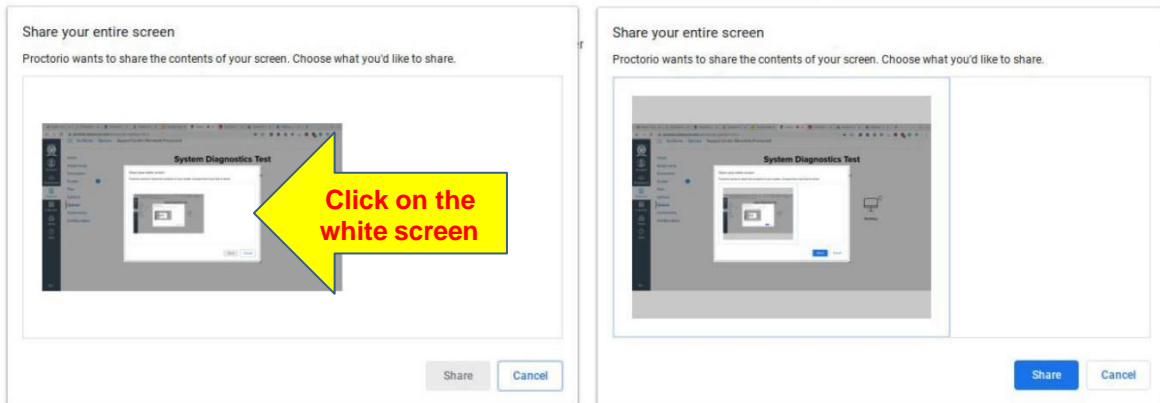


Connection

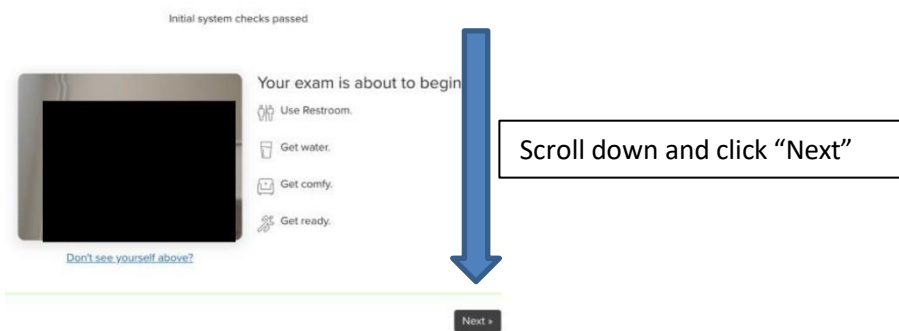


Desktop

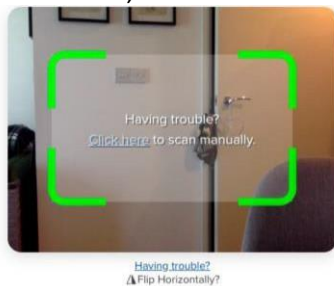
8. You will be asked to share your screen. **You have to click on the picture of your screen within the pop-up window.** Only after clicking the image of your screen, will you be able to click the share button .

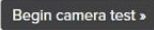


9. **System Diagnostics Test**



10. Next is the ID check. Hold your Photo ID in front of your webcam and position it in the green box. If the ID does not scan automatically, click on "Click here" to scan manually. Once the Photo ID is scanned, click "next".



11. You are required to have your face captured by the webcam. Position your face in the center of the webcam and ensure that it is clearly visible in the box provided. Click .

12. You will be brought to a screen as shown below. This is **NOT** the step to perform the room scan, but just a reminder that a room scan of the examination environment is required when you

commence the exam later. Click the grey button

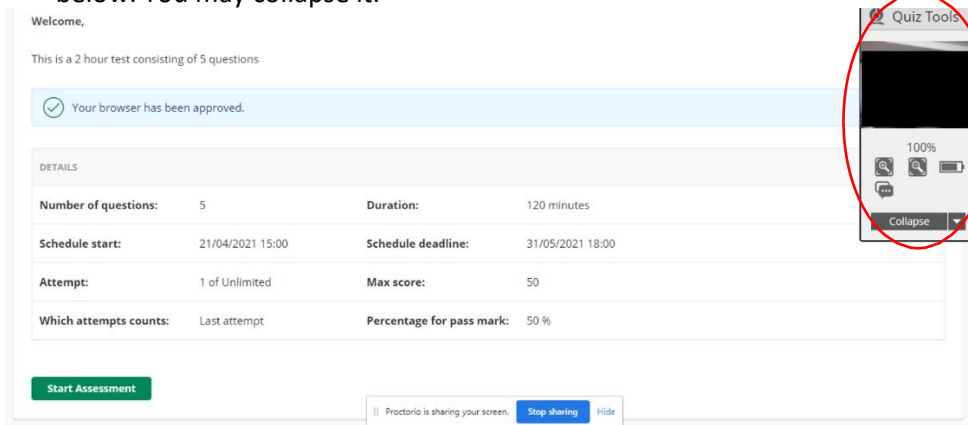
I understand >

to continue.



I understand >

13. You will be brought to a screen to start the assessment. You will see a 'Quiz Tool' as circled below. You may collapse it.



14. Click on **Start Assessment** to start the exam. The timer for the duration of the exam will begin.

15. A window will appear, asking you to scan your examination environment. Click **START SCAN** to scan the environment and follow the instructions on the screen.

**IMPORTANT** Slowly move your webcam and show your surroundings & desk area.

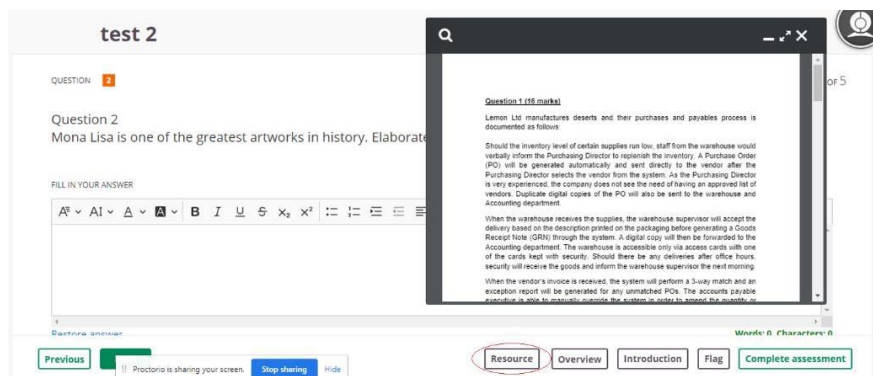
16. **Do not** click on the 'Stop sharing' button at the bottom of the screen as you will be 'logged out' of the examination. Should this happen, log into [Cirrus platform](#) and start the examination again. Do note that you will be required to perform the 'check-in process' again and no extension of examination duration will be provided.



## Viewing and answering questions

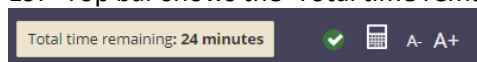
17. There are 2 ways to access your Question Paper. You can either download the paper in Question 1 or click on **Resource** button (available at the bottom of every Question) as shown below.

**Printing of Question Paper is not allowed**



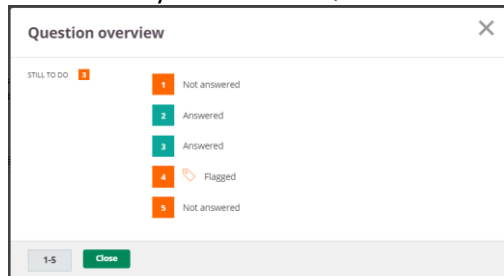
18. In addition to the Question Paper, examination instructions/information and additional attachments for certain examination modules will also be provided in Question 1. You are **not** required to key in answers for Question 1.

19. Top bar shows the 'Total time remaining', a basic calculator and font size control.



20. Click on **Previous** **Next** buttons to navigate between the questions.

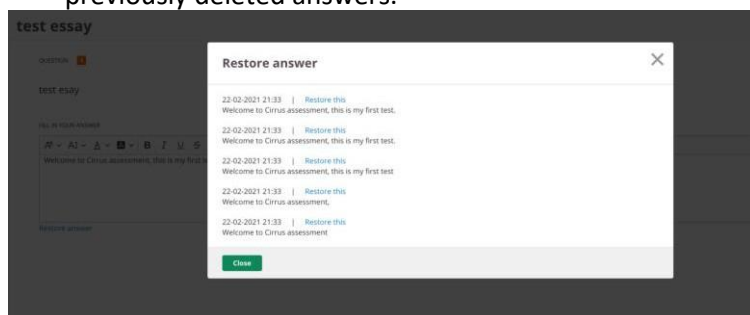
21. Click on **Overview** button to show the status of questions (answered, unanswered or flagged). You may click on the Question numbers to be linked directly to the Question.



22. Click on **Introduction** button to view the 'Welcome Page'.

23. Candidates are allowed to use Microsoft Excel for computation of answers. Copy the necessary answers from Microsoft Excel onto the Cirrus answer window. **Only answers submitted via the answer window in Cirrus platform will be marked.**

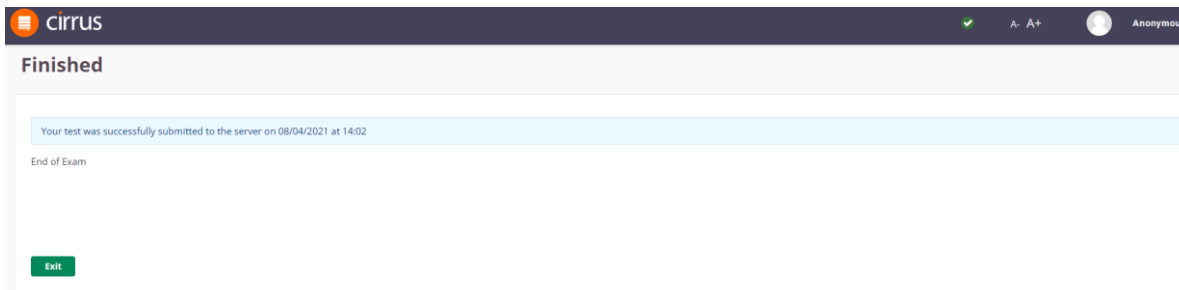
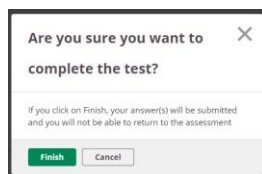
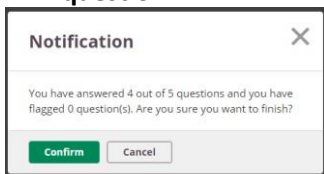
24. 'Restore Answer' feature available at the bottom left of the answer field allows the restoring of previously deleted answers.



25. Click on **Complete assessment** button if you wish to submit the examination.



26. As no answers are required for Cirrus Question 1, there will always be at least 1 unanswered question.



## (B) What to expect on Exam Day

### Starting your exam

1. Log in to the [Cirrus Platform](#) at least 10 minutes before the scheduled start time of the examination.
2. Start the examination on time. You are only allowed a 15 minutes grace period to start the examination. Late comers will not be permitted to start the examination.

### Toilet breaks

3. Indicate this by saying 'toilet break' to webcam.

### Ending your exam

4. Your script is auto submitted at the end of the exam duration, if you have not clicked the [Complete assessment](#) button when you have finished your exam.

### Issues during the examination

5. **Examination takers facing issues during the examination are to contact ISCA invigilators via the hotline number which will be provided in Cirrus Question 1.**
6. If the exam ends unexpectedly due to device breakdown, you may switch to another device during the examination. If there is prolonged internet disconnection, you will be 'logged out' of the examination. Should this happen, re-connect back your internet. Regardless of the situation, you need to log into [Cirrus platform](#) and start the examination and perform the 'check-in process' again. Do note that no extra time will be awarded. Exam takers are to report the incident to the ISCA after the examination.

## SECTION 4: EXAMINATION DISCIPLINARY POLICY

### (A) Disciplinary Policy

1. All candidates are required to hold themselves to the highest standard of integrity and comply with the [Exam Disciplinary Policy](#). Ignorance will not be accepted as a justification for non-compliance.

### (B) Grounds for Disciplinary Actions

2. Exam Breaches include but are not limited to:
  - a. Cheating, including:
    - i. Use, sight or hearing of, unauthorised materials, including online resources / prohibited items;
    - ii. Gaining unauthorised access to Internet or communicating with external parties during exam;
    - iii. Colluding – Receiving/providing assistance, whether in person, electronic, or written.
  - b. Impersonation;
  - c. Non-conformance to exam rules;
  - d. Furnishing misleading or false information or declaration (including false medical certificates);
  - e. Fabricating or altering information, data or document and presenting it as legitimate;
  - f. Failure to comply with the instructions;
  - g. Intentionally causing hardware or software failures in electronic devices during the exams in order to be eligible for deferment;
  - h. Failure to perform a 360-degree scan of the environment in the event of a remotely conducted e-Exam.
3. Whilst investigation is underway, the candidate's results may be withheld pending investigation outcome.

## SECTION 5: EXAMINATION AND CONTACT DETAILS

### (A) Examination Details

	<b>Foundation Programme</b> (Restricted open-book exam)	<b>Professional Programme</b> (Open-book exam)
Examination Dates	Please refer <a href="#">here</a>	Please refer <a href="#">here</a>
Examination Duration	3 hours 15 mins from your actual start time (for all modules)	3 hours 15 mins from your actual start time (for Technical modules) 4 hours 30 mins from your actual start time (for Integrative Business Solutions module)

### (B) Contact Details

For general queries or assistance, please contact ISCA at (65) 6749 8060, during office hours or [scaq@isca.org.sg](mailto:scaq@isca.org.sg).